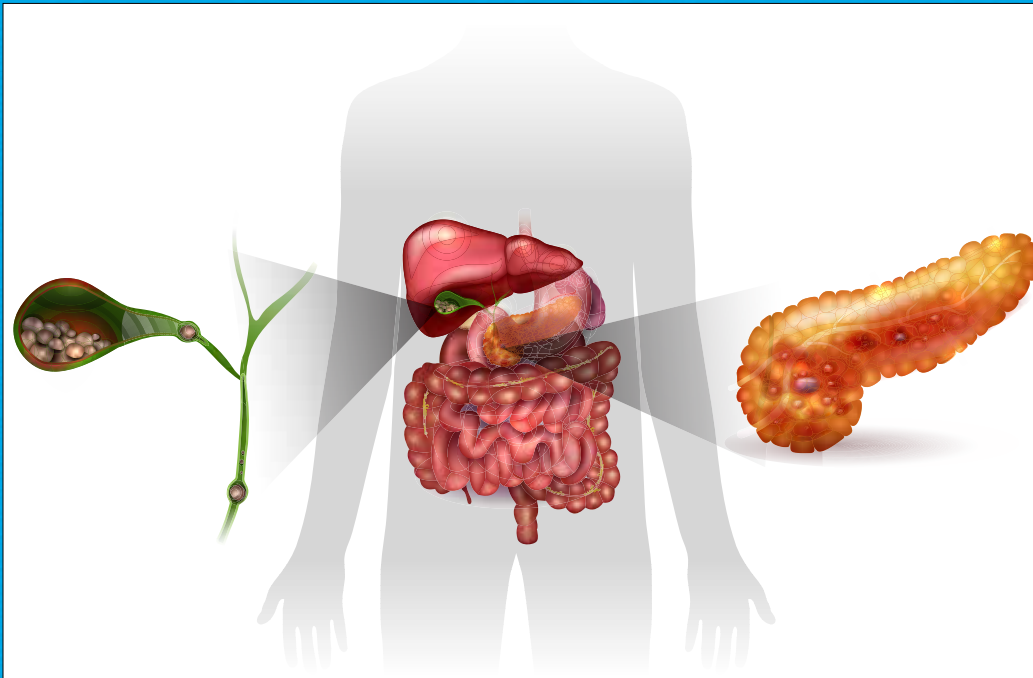




# THE TURKISH JOURNAL OF GASTROENTEROLOGY

OFFICIAL JOURNAL OF THE TURKISH SOCIETY OF GASTROENTEROLOGY



## C-reactive protein in acute pancreatitis

### ISSUE HIGHLIGHTS

- ◆ Non-invasive diagnosis of esophageal varices
- ◆ Critical flicker frequency test for diagnosing minimal hepatic encephalopathy
- ◆ Predictive factors of neoplastic gallbladder polyps
- ◆ Surgical management of pancreatic solid pseudopapillary tumor in children
- ◆ Esophageal squamous cell papillomas with human papilloma virus

◆ Indexed in Science Citation Index Expanded, and PubMed/MEDLINE





# THE TURKISH JOURNAL OF GASTROENTEROLOGY

## ■ Editor in Chief

Osman Cavit Özdoğan

Department of Gastroenterology, Marmara University School of  
Medicine, İstanbul, Turkey

## ■ Section Editors

Ramazan İdilman

Department of Gastroenterology, Ankara University  
School of Medicine, Ankara, Turkey

Tarkan Karakan

Department of Gastroenterology, Gazi University School  
of Medicine, Ankara, Turkey

Yeşim Öztürk

Department of Pediatric Gastroenterology, Dokuz Eylül  
University School of Medicine, İzmir, Turkey

Murat Saruç

Department of Internal Medicine, Division of  
Gastroenterology, Acibadem University School of  
Medicine, İstanbul, Turkey

Berrak Yeğen

Department of Physiology, Marmara University School  
of Medicine, İstanbul, Turkey

## ■ Associate Editors

Mesut Akarsu

Department of Gastroenterology, Dokuz Eylül University  
School of Medicine, İzmir, Turkey

Filiz Akyüz

Department of Gastroenterology, İstanbul University  
School of Medicine, İstanbul, Turkey

Canan Alkım

Clinic of Gastroenterology, Şişli Etfal Training and  
Research Hospital, İstanbul, Turkey

Fatih Aslan

Clinic of Gastroenterology, Atatürk Training and  
Research Hospital, İzmir, Turkey

Ayhan Bozkurt

Department of Physiology, Ondokuz Mayıs University  
School of Medicine, Samsun, Turkey

Mehmet Bülbül

Department of Physiology, Akdeniz University School of  
Medicine, Antalya, Turkey

Altay Çelebi

Department of Gastroenterology, Kocaeli University  
School of Medicine, Kocaeli, Turkey

Ülkü Dağlı

Department of Gastroenterology, Başkent University  
School of Medicine, Ankara, İstanbul, Turkey

Selçuk Dişibeyaz

Department of Gastroenterology, Eskişehir Osmangazi  
University School of Medicine, Eskişehir Turkey

Deniz Duman

Department of Gastroenterology, Marmara University  
School of Medicine, İstanbul, Turkey





# THE TURKISH JOURNAL OF GASTROENTEROLOGY

Fulya Günşar

Department of Gastroenterology, Ege University School of Medicine, İzmir, Turkey

Aydın Şeref Köksal

Department of Gastroenterology, Sakarya University School of Medicine, Sakarya, Turkey

Zarife Kuloğlu

Department of Pediatric Gastroenterology, Ankara University School of Medicine, Ankara, Turkey

Dilek Oğuz

Department of Gastroenterology, Kırıkkale University School of Medicine, Kırıkkale, Turkey

Sedef Özdal Kuran

Department of Gastroenterology, Çukurova University School of Medicine, Balçalı Hospital, Adana, Turkey

Müjde Soytürk

Department of Gastroenterology, Dokuz Eylül University School of Medicine, İzmir, Turkey

Fatih Tekin

Department of Gastroenterology, Ege University School of Medicine, İzmir, Turkey

Müjdat Zeybel

Department of Gastroenterology, Koç University Hospital, İstanbul, Turkey

Sinan Sarı

Department of Pediatric Gastroenterology, Gazi University School of Medicine, Ankara, Turkey

## ■ International Associated Editor

Ahmet Gürakar

Department of Gastroenterology and Hepatology, Johns Hopkins University School of Medicine, Baltimore, USA

## ■ Production Coordinator

Ayhan Hilmi Çekin

University of Health Sciences; Clinic of Gastroenterology Antalya Training and Research Hospital, Antalya, Turkey

## ■ Biostatistical Editor

Gülşah Seydaoğlu

Department of Biostatistics, Çukurova University School of Medicine, Adana, Turkey

*Türk Gastroenteroloji Derneği adına sahibi / Owned by on behalf of the Turkish Society of Gastroenterology: Serhat Bor • Sorumlu Yazı İşleri Müdürü / Executive Editor: Osman Cavit Özdoğan • Yayın türü / Publication Type: Yıllık süreli / Bimonthly periodical • Basım yeri / Printed at: Matsis Matbaa Hizmetleri San. ve Tic. Ltd. Şti. İstanbul, Turkey (+90-212-6242111) • Basım tarihi / Printing Date: Mayıs 2017 / May 2017 • Türk Gastroenteroloji Derneği tarafından yayınlanmaktadır / Published by Turkish Society of Gastroenterology, Mustafa Kemal Mahallesi, 2126 Sokak, Kolbay İş Merkezi, C blok, No.: 6-9, Çankaya, Ankara, Turkey*



Publisher  
İbrahim KARA

Publication Director  
Ali ŞAHİN

Deputy Publication Director  
Gökhan ÇİMEN

Publication Coordinators  
Betül ÇİMEN  
Zeynep YAKIŞIRER

Gizem KAYAN  
Melike Buse ŞENAY

Publication Secretary  
Özlem ÇAKMAK

Project Coordinator  
Hakan ERTEEN

Project Assistants  
Aylin ATALAY  
Şükriye YILMAZ  
Cansu ERDOĞAN

Graphics Department  
Ünal ÖZER  
Neslihan YAMAN  
Deniz DURAN

Contact  
Address: Büyükdere Cad. No: 105/9  
34394 Mecidiyeköy, Şişli, İstanbul-Turkey  
Phone: +90 212 217 17 00  
Fax: +90 212 217 22 92  
E-mail: info@avesyayincilik.com





# THE TURKISH JOURNAL OF GASTROENTEROLOGY

## Aims and Scope

The Turkish Journal of Gastroenterology (Turk J Gastroenterol) is the double-blind peer-reviewed, open access, international publication organ of the Turkish Society of Gastroenterology. The journal is a bimonthly publication, published on January, March, May, July, September, November and its publication language is English.

The Turkish Journal of Gastroenterology aims to publish international at the highest clinical and scientific level on original issues of gastroenterology and hepatology. The journal publishes original papers, review articles, case reports and letters to the editor on clinical and experimental gastroenterology and hepatology.

The editorial and publication processes of the journal are shaped in accordance with the guidelines of the International Committee of Medical Journal Editors (ICMJE), World Association of Medical Editors (WAME), Council of Science Editors (CSE), Committee on Publication Ethics (COPE), European Association of Science Editors (EASE), and National Information Standards Organization (NISO). The journal is in conformity with the Principles of Transparency and Best Practice in Scholarly Publishing (doaj.org/bestpractice).

The Turkish Journal of Gastroenterology is indexed in Science Citation Index Expanded, PubMed/MEDLINE and TUBITAK ULAKBIM TR Index.

Processing and publication are free of charge with the journal. No fees are requested from the authors at any point throughout the evaluation and publication process. All manuscripts must be submitted via the online submission system, which is available at [www.turkjgastroenterol.org](http://www.turkjgastroenterol.org). The journal guidelines, technical information, and the required forms are available on the journal's web page.

All expenses of the journal are covered by the Turkish Society of Gastroenterology. Potential advertisers should contact the Editorial Office. Advertisement images are published only upon the Editor-in-Chief's approval.

Statements or opinions expressed in the manuscripts published in the journal reflect the views of the author(s) and not the opinions of the Turkish Society of Gastroenterology, editors, editorial board, and/or publisher; the editors, editorial board, and publisher disclaim any responsibility or liability for such materials.

All published content is available online, free of charge at [www.turkjgastroenterol.org](http://www.turkjgastroenterol.org). Printed copies of the journal are distributed to the members of the Turkish Society of Gastroenterology, free of charge.

Turkish Society of Gastroenterology holds the international copyright of all the content published in the journal.



**Editor in Chief:** Prof. Osman Cavit Özdoğan

**Address:** Mustafa Kemal Mahallesi, 2126 Sokak, Kolbay İş Merkezi, C blok, No.: 6-9, Çankaya, Ankara, TURKEY

**Phone:** +90 312 284 15 11

**Fax:** +90 312 284 80 75

**E-mail:** [tgd@tgd.org.tr](mailto:tgd@tgd.org.tr)

**Publisher:** AVES

**Address:** Büyükdere Cad., 105/9 34394 Mecidiyeköy, Şişli, İstanbul, TURKEY

**Phone:** +90 212 217 17 00

**Fax:** +90 212 217 22 92

**E-mail:** [info@avesyayincilik.com](mailto:info@avesyayincilik.com)

**Web page:** [www.avesyayincilik.com](http://www.avesyayincilik.com)





# THE TURKISH JOURNAL OF GASTROENTEROLOGY

## Instructions to Authors

The Turkish Journal of Gastroenterology (Turk J Gastroenterol) is the double-blind peer-reviewed, open access, international publication organ of the Turkish Society of Gastroenterology. The journal is a bimonthly publication, published on January, March, May, July, September, November and its publication language is English.

The Turkish Journal of Gastroenterology aims to publish international at the highest clinical and scientific level on original issues of gastroenterology and hepatology. The journal publishes original papers, review articles, case reports and letters to the editor on clinical and experimental gastroenterology and hepatology.

The editorial and publication processes of the journal are shaped in accordance with the guidelines of the International Council of Medical Journal Editors (ICMJE), the World Association of Medical Editors (WAME), the Council of Science Editors (CSE), the Committee on Publication Ethics (COPE), the European Association of Science Editors (EASE), and National Information Standards Organization (NISO). The journal conforms to the Principles of Transparency and Best Practice in Scholarly Publishing ([doaj.org/bestpractice](http://doaj.org/bestpractice)).

Originality, high scientific quality, and citation potential are the most important criteria for a manuscript to be accepted for publication. Manuscripts submitted for evaluation should not have been previously presented or already published in an electronic or printed medium. The journal should be informed of manuscripts that have been submitted to another journal for evaluation and rejected for publication. The submission of previous reviewer reports will expedite the evaluation process. Manuscripts that have been presented in a meeting should be submitted with detailed information on the organization, including the name, date, and location of the organization.

Manuscripts submitted to the Turkish Journal of Gastroenterology will go through a double-blind peer-review process. Each submission will be reviewed by at least two external, independent peer reviewers who are experts in their fields in order to ensure an unbiased evaluation process. The editorial board will invite an external and independent editor to manage the evaluation processes of manuscripts submitted by editors or by the editorial board members of the journal. The Editor in Chief is the final authority in the decision-making process for all submissions.

An approval of research protocols by the Ethics Committee in accordance with international agreements [World Medical Association Declaration of Helsinki "Ethical Principles for Medical Research Involving Human Subjects," amended in October 2013, [www.wma.net](http://www.wma.net)] is required for experimental, clinical, and drug studies and for some case reports. If required, ethics committee reports or an equivalent official document will be requested from the authors. For manuscripts concerning experimental research on humans, a statement should be included that shows that written informed consent of patients and volunteers was obtained following a detailed explanation of the procedures that they may undergo. For studies carried out on animals, the measures taken to prevent pain and suffering of the animals should be stated clearly. Information on patient consent, the name of the ethics committee, and the ethics committee ap-

proval number should also be stated in the Materials and Methods section of the manuscript. It is the authors' responsibility to carefully protect the patients' anonymity. For photographs that may reveal the identity of the patients, releases signed by the patient or their legal representative should be enclosed.

All submissions are screened by a similarity detection software (iThenticate by CrossCheck).

In the event of alleged or suspected research misconduct, e.g., plagiarism, citation manipulation, and data falsification/fabrication, the Editorial Board will follow and act in accordance with COPE guidelines.

Each individual listed as an author should fulfill the authorship criteria recommended by the International Committee of Medical Journal Editors

(ICMJE - [www.icmje.org](http://www.icmje.org)). The ICMJE recommends that authorship be based on the following 4 criteria:

- 1 Substantial contributions to the conception or design of the work; or the acquisition, analysis, or interpretation of data for the work; AND
- 2 Drafting the work or revising it critically for important intellectual content; AND
- 3 Final approval of the version to be published; AND
- 4 Agreement to be accountable for all aspects of the work in ensuring that questions related to the accuracy or integrity of any part of the work are appropriately investigated and resolved.

In addition to being accountable for the parts of the work he/she has done, an author should be able to identify which co-authors are responsible for specific other parts of the work. In addition, authors should have confidence in the integrity of the contributions of their co-authors.

All those designated as authors should meet all four criteria for authorship, and all who meet the four criteria should be identified as authors. Those who do not meet all four criteria should be acknowledged in the title page of the manuscript.

The Turkish Journal of Gastroenterology requires corresponding authors to submit a signed and scanned version of the authorship contribution form (available for download through [www.turkjgastroenterol.org](http://www.turkjgastroenterol.org)) during the initial submission process in order to act appropriately on authorship rights and to prevent ghost or honorary authorship. If the editorial board suspects a case of "gift authorship," the submission will be rejected without further review. As part of the submission of the manuscript, the corresponding author should also send a short statement declaring that he/she accepts to undertake all the responsibility for authorship during the submission and review stages of the manuscript.

The Turkish Journal of Gastroenterology requires and encourages the authors and the individuals involved in the evaluation process of submitted manuscripts to disclose any existing or potential conflicts





# THE TURKISH JOURNAL OF GASTROENTEROLOGY

of interests, including financial, consultant, and institutional, that might lead to potential bias or a conflict of interest. Any financial grants or other support received for a submitted study from individuals or institutions should be disclosed to the Editorial Board. To disclose a potential conflict of interest, the ICMJE Potential Conflict of Interest Disclosure Form should be filled in and submitted by all contributing authors. Cases of a potential conflict of interest of the editors, authors, or reviewers are resolved by the journal's Editorial Board within the scope of COPE and ICMJE guidelines.

The Editorial Board of the journal handles all appeal and complaint cases within the scope of COPE guidelines. In such cases, authors should get in direct contact with the editorial office regarding their appeals and complaints. When needed, an ombudsperson may be assigned to resolve cases that cannot be resolved internally. The Editor in Chief is the final authority in the decision-making process for all appeals and complaints.

When submitting a manuscript to The Turkish Journal of Gastroenterology, authors accept to assign the copyright of their manuscript to the Turkish Society of Gastroenterology. If rejected for publication, the copyright of the manuscript will be assigned back to the authors. The Turkish Journal of Gastroenterology requires each submission to be accompanied by a Copyright Transfer Form (available for download at [www.turkjgastroenterol.org](http://www.turkjgastroenterol.org)). When using previously published content, including figures, tables, or any other material in both print and electronic formats, authors must obtain permission from the copyright holder. Legal, financial and criminal liabilities in this regard belong to the author(s).

Statements or opinions expressed in the manuscripts published in The Turkish Journal of Gastroenterology reflect the views of the author(s) and not the opinions of the editors, the editorial board, or the publisher; the editors, the editorial board, and the publisher disclaim any responsibility or liability for such materials. The final responsibility in regard to the published content rests with the authors.

## MANUSCRIPT PREPARATION

The manuscripts should be prepared in accordance with ICMJE-Recommendations for the Conduct, Reporting, Editing, and Publication of Scholarly Work in Medical Journals (updated in December 2016 - <http://www.icmje.org/icmje-recommendations.pdf>). Authors are required to prepare manuscripts in accordance with the CONSORT guidelines for randomized research studies, STROBE guidelines for observational original research studies, STARD guidelines for studies on diagnostic accuracy, PRISMA guidelines for systematic reviews and meta-analysis, ARRIVE guidelines for experimental animal studies, and TREND guidelines for non-randomized public behavior.

Manuscripts can only be submitted through the journal's online manuscript submission and evaluation system, available at [www.turkjgastroenterol.org](http://www.turkjgastroenterol.org). Manuscripts submitted via any other medium will not be evaluated.

Manuscripts submitted to the journal will first go through a technical evaluation process where the editorial office staff will ensure

that the manuscript has been prepared and submitted in accordance with the journal's guidelines. Submissions that do not conform to the journal's guidelines will be returned to the submitting author with technical correction requests.

Authors are required to submit the following:

- Copyright Transfer Form,
- Author Contributions Form, and
- ICMJE Potential Conflict of Interest Disclosure Form (should be filled in by all contributing authors) during the initial submission. These forms are available for download at [www.turkjgastroenterol.org](http://www.turkjgastroenterol.org).

## Preparation of the Manuscript

**Title page:** A separate title page should be submitted with all submissions and this page should include:

- The full title of the manuscript as well as a short title (running head) of no more than 50 characters,
- Name(s), affiliations, and highest academic degree(s) of the author(s),
- Grant information and detailed information on the other sources of support,
- Name, address, telephone (including the mobile phone number) and fax numbers, and email address of the corresponding author,
- Acknowledgment of the individuals who contributed to the preparation of the manuscript but who do not fulfill the authorship criteria.

**Abstract:** An English abstract should be submitted with all submissions except for Letters to the Editor. Submitting a Turkish abstract is not compulsory for international authors. The abstract of Original Articles should be structured with subheadings (Background/Aims, Materials and Methods, Results, and Conclusion). Please check Table 1 below for word count specifications.

**Keywords:** Each submission must be accompanied by a minimum of three to a maximum of six keywords for subject indexing at the end of the abstract. The keywords should be listed in full without abbreviations. The keywords should be selected from the National Library of Medicine, Medical Subject Headings database (<https://www.nlm.nih.gov/mesh/MBrowser.html>).

## Manuscript Types

**Original Articles:** This is the most important type of article since it provides new information based on original research. The main text of original articles should be structured with Introduction, Materials and Methods, Results, and Discussion subheadings. Please check Table 1 for the limitations for Original Articles.

Statistical analysis to support conclusions is usually necessary. Statistical analyses must be conducted in accordance with international statistical reporting standards (Altman DG, Gore SM, Gardner MJ, Pocock SJ. Statistical guidelines for contributors to medical journals. *Br Med J* 1983; 7; 1489-93). Information on statistical





# THE TURKISH JOURNAL OF GASTROENTEROLOGY

analyses should be provided with a separate subheading under the Materials and Methods section and the statistical software that was used during the process must be specified.

Units should be prepared in accordance with the International System of Units (SI).

**Editorial Comments:** Editorial comments aim to provide a brief critical commentary by reviewers with expertise or with high reputation in the topic of the research article published in the journal. Authors are selected and invited by the journal to provide such comments. Abstract, Keywords, and Tables, Figures, Images, and other media are not included.

**Review Articles:** Reviews prepared by authors who have extensive knowledge on a particular field and whose scientific background has been translated into a high volume of publications with a high citation potential are welcomed. These authors may even be invited by the journal. Reviews should describe, discuss, and evaluate the current level of knowledge of a topic in clinical practice and should guide future studies. The main text should contain Introduction, Clinical and Research Consequences, and Conclusion sections. Please check Table 1 for the limitations for Review Articles.

**Case Reports:** There is limited space for case reports in the journal and reports on rare cases or conditions that constitute challenges in diagnosis and treatment, those offering new therapies or revealing knowledge not included in the literature, and interesting and educative case reports are accepted for publication. The text should include Introduction, Case Presentation, and Discussion subheadings. Please check Table 1 for the limitations for Case Reports.

**Letters to the Editor:** This type of manuscript discusses important parts, overlooked aspects, or lacking parts of a previously published article. Articles on subjects within the scope of the journal that might attract the readers' attention, particularly educative cases, may also be submitted in the form of a "Letter to the Editor." Readers can also present their comments on the published manuscripts in the form of a "Letter to the Editor." Abstract, Keywords, and Tables, Figures, Images, and other media should not be included. The text should be unstructured. The manuscript that is being commented on must be properly cited within this manuscript.

**Diagnostic Challenge:** Turkish Journal of Gastroenterology encourages authors to submit their striking clinical images that may challenge and inform readers and contribute to their education. This type of submissions should present the image as an "unknown" and should encourage the readers to interpret and diagnose the image. The answer will be presented on a separate page of the issue so the main text or the title should not reveal the answer. The case should be described in the first part; the answer should discuss the image findings and the diagnosis. The article should not be longer than 1200 words.

**Quick look to guidelines:** These manuscripts are summaries of published guidelines. Abstract, Keywords, and Tables, Figures, Images, and other media should not be included. The text should

be unstructured. The guideline that is being summarized must be properly cited within the manuscript.

**Table 1.** Limitations for each manuscript type

Type of manuscript	Word limit	Abstract word limit	Reference limit	Table limit	Figure limit
Original Article	3500	250 (Structured)	30	6	7 or total of 15 images
Review Article	5000	250	50	6	10 or total of 20 images
Case Report	1000	200	15	No tables	10 or total of 20 images
Letter to the Editor	500	No abstract	5	No tables	No media
Diagnostic Challenge	1200	No abstract	5	No tables	7 or total of 15 images

## Tables

Tables should be included in the main document, presented after the reference list, and they should be numbered consecutively in the order they are referred to within the main text. A descriptive title must be placed above the tables. Abbreviations used in the tables should be defined below the tables by footnotes (even if they are defined within the main text). Tables should be created using the "insert table" command of the word processing software and they should be arranged clearly to provide easy reading. Data presented in the tables should not be a repetition of the data presented within the main text but should be supporting the main text.

## Figures and Figure Legends

Figures, graphics, and photographs should be submitted as separate files (in TIFF or JPEG format) through the submission system. The files should not be embedded in a Word document or the main document. When there are figure subunits, the subunits should not be merged to form a single image. Each subunit should be submitted separately through the submission system. Images should not be labeled (a, b, c, etc.) to indicate figure subunits. Thick and thin arrows, arrowheads, stars, asterisks, and similar marks can be used on the images to support figure legends. Like the rest of the submission, the figures too should be blind. Any information within the images that may indicate an individual or institution should be blinded. The minimum resolution of each submitted figure should be 300 DPI. To prevent delays in the evaluation process, all submitted figures should be clear in resolution and large in size (minimum dimensions: 100 × 100 mm). Figure legends should be listed at the end of the main document.

All acronyms and abbreviations used in the manuscript should be defined at first use, both in the abstract and in the main text. The abbreviation should be provided in parentheses following the definition.

When a drug, product, hardware, or software program is mentioned within the main text, product information, including the name of the





# THE TURKISH JOURNAL OF GASTROENTEROLOGY

product, the producer of the product, and city and the country of the company (including the state if in USA), should be provided in parentheses in the following format: "Discovery St PET/CT scanner (General Electric, Milwaukee, WI, USA)"

All references, tables, and figures should be referred to within the main text, and they should be numbered consecutively in the order they are referred to within the main text.

Limitations, drawbacks, and the shortcomings of original articles should be mentioned in the Discussion section before the conclusion paragraph.

## References

While citing publications, preference should be given to the latest, most up-to-date publications. If an ahead-of-print publication is cited, the DOI number should be provided. Authors are responsible for the accuracy of references. Journal titles should be abbreviated in accordance with the journal abbreviations in Index Medicus/MEDLINE/PubMed. When there are six or fewer authors, all authors should be listed. If there are seven or more authors, the first three authors should be listed followed by "et al." In the main text of the manuscript, references should be cited using Arabic numbers in parentheses. The reference styles for different types of publications are presented in the following examples.

**Journal Article:** Rankovic A, Rancic N, Jovanovic M, Ivanović M, Gajović O, Lazić Z, et al. Impact of imaging diagnostics on the budget - Are we spending too much? *Vojnosanit Pregl* 2013; 70: 709-11.

**Book Section:** Suh KN, Keystone JS. Malaria and babesiosis. Gorbach SL, Bartlett JG, Blacklow NR, editors. *Infectious Diseases*. Philadelphia: Lippincott Williams; 2004.p.2290-308.

**Books with a Single Author:** Sweetman SC. *Martindale the Complete Drug Reference*. 34th ed. London: Pharmaceutical Press; 2005.

**Editor(s) as Author:** Huizing EH, de Groot JAM, editors. *Functional reconstructive nasal surgery*. Stuttgart-New York: Thieme; 2003.

**Conference Proceedings:** Bengissson S, Sothemin BG. Enforcement of data protection, privacy and security in medical informatics. In: Lun KC, Degoulet P, Piemme TE, Rienhoff O, editors. *MEDINFO 92. Proceedings of the 7th World Congress on Medical Informatics*; 1992 Sept 6-10; Geneva, Switzerland. Amsterdam: North-Holland; 1992. pp.1561-5.

**Scientific or Technical Report:** Cusick M, Chew EY, Hoogwerf B, Agrón E, Wu L, Lindley A, et al. Early Treatment Diabetic Retinopathy Study Research Group. Risk factors for renal replacement therapy in the Early Treatment Diabetic Retinopathy Study (ETDRS), Early Treatment Diabetic Retinopathy Study *Kidney Int*: 2004. Report No: 26.

**Thesis:** Yılmaz B. Ankara Üniversitesi'ndeki Öğrencilerin Beslenme Durumları, Fiziksel Aktiviteleri ve Beden Kitle İndeksleri Kan Lipidleri Arasındaki İlişkiler. H.Ü. Sağlık Bilimleri Enstitüsü, Doktora Tezi. 2007.

**Manuscripts Accepted for Publication, Not Published Yet:** Slots J. The microflora of black stain on human primary teeth. *Scand J Dent Res*. 1974.

**Epub Ahead of Print Articles:** Cai L, Yeh BM, Westphalen AC, Roberts JP, Wang ZJ. Adult living donor liver imaging. *Diagn Interv Radiol*. 2016 Feb 24. doi: 10.5152/dir.2016.15323. [Epub ahead of print].

**Manuscripts Published in Electronic Format:** Morse SS. Factors in the emergence of infectious diseases. *Emerg Infect Dis* (serial online) 1995 Jan-Mar [cited 1996 June 5]; 1(1): [24 screens]. Available from: URL: <http://www.cdc.gov/ncidod/EID/cid.htm>.

## REVISIONS

When submitting a revised version of a paper, the author must submit a detailed "Response to the reviewers" that states point by point how each issue raised by the reviewers has been covered and where it can be found (each reviewer's comment, followed by the author's reply and line numbers where the changes have been made) as well as an annotated copy of the main document. Revised manuscripts must be submitted within 30 days from the date of the decision letter. If the revised version of the manuscript is not submitted within the allocated time, the revision option may be canceled. If the submitting author(s) believe that additional time is required, they should request this extension before the initial 30-day period is over.

Accepted manuscripts are copy-edited for grammar, punctuation, and format. Once the publication process of a manuscript is completed, it is published online on the journal's webpage as an ahead-of-print publication before it is included in its scheduled issue. A PDF proof of the accepted manuscript is sent to the corresponding author and their publication approval is requested within 2 days of their receipt of the proof.

**Editor in Chief:** Prof. Osman Cavit Özdoğan

**Address:** Mustafa Kemal Mahallesi, 2126 Sokak, Kolbay İş Merkezi, C blok, No.: 6-9, Çankaya, Ankara, TURKEY

**Phone:** +90 312 284 15 11

**Fax:** +90 312 284 80 75

**E-mail:** [tgd@tgd.org.tr](mailto:tgd@tgd.org.tr)

**Publisher:** AVES

**Address:** Büyükdere Cad., 105/9 34394 Mecidiyeköy, Şişli, İstanbul, TURKEY

**Phone:** +90 212 217 17 00

**Fax:** +90 212 217 22 92

**E-mail:** [info@avesyayincilik.com](mailto:info@avesyayincilik.com)

**Web page:** [www.avesyayincilik.com](http://www.avesyayincilik.com)





# THE TURKISH JOURNAL OF GASTROENTEROLOGY

## Covering the Cover

### 153 Covering the Cover

*Müjdat Zeybel*

## Editorials

### 155 Critical flicker frequency: A stethoscope for minimal hepatic encephalopathy evaluation

*Praveen Sharma*

### 157 C-Reactive Protein Levels Together with the Ranson Scoring System to Differentiate the Mild and Severe Forms of Acute Pancreatitis

*Yücel Üstündağ*

## Review

### 159 Non-invasive diagnosis of esophageal varices after Baveno VI

*Carlos Moctezuma-Velázquez, Juan G. Abraldes*

## Original Articles

### Gastrointestinal Tract

### 166 Prognostic value of tumoral expression of galectin-9 in gastric cancer

*Sang Il Choi, Ki-woo Seo, Myeong-Cherl Kook, Chan Gyoo Kim, Young-Woo Kim, Soo-Jeong Cho*

### 171 Pregnancy does not affect fecal calprotectin concentration in healthy women

*Anita Bálint, Anna Berényi, Klaudia Farkas, Éva Pallagi-Kunstár, Ábel Altorjay, Andrea Csonka, Mária Krizsán, Mónika Szűcs, Attila Pál, Anna Fábrián, Renáta Bor, Ágnes Milassin, Ádám Szulcsán, Rutka Mariann, Zoltán Szepes, Tamás Molnár*

### 176 Analyzing esophageal squamous cell papillomas for the presence of human papilloma virus

*Arzu Tiftikçi, Eser Kutsal, Ender Altıok, Ümit İnce, Bahattin Çicek, Murat Saruç, Nurten Türkel, Özdal Ersoy, Güven Yenmiş, Nurdan Tözün*

### 179 Risk factors of bloating and its association with common gastrointestinal disorders in a sample of Iranian adults

*Ammar Hassanzadeh Keshteli, Parnaz Daneshpajouhnejad, Peyman Adibi*

### Liver

### 191 Critical flicker frequency test for diagnosing minimal hepatic encephalopathy in patients with cirrhosis

*Banu Demet Özel Coşkun, Mustafa Özen*

### 197 Evaluation of local tumor residue after percutaneous radiofrequency ablation therapy for hepatocellular carcinoma

*Jun Hamanaka, Tohru Goto, Shuhei Nishigori, Shihoko Seki, Tomonori Ida, Taiki Morohashi, Hiroshi Ohara, Masahiko Inamori, Shin Maeda*

### Pancreaticobiliary

### 202 Predictive factors of neoplastic gallbladder polyps: Outcomes of 278 patients

*Serdar Gökay Terzioğlu, Murat Özgür Kılıç, Ali Sapmaz, Ahmet Serdar Karaca*





# THE TURKISH JOURNAL OF GASTROENTEROLOGY

- **207 Can C-reactive protein levels increase the accuracy of the Ranson score in predicting the severity and prognosis of acute pancreatitis? A prospective cohort study**

*Fatih Başak, Mustafa Hasbahçeci, Abdullah Şişik, Aylin Acar, Kemal Tekesin, Gürhan Baş, Orhan Alimoğlu*

## Pediatric Gastroenterology

- **214 Radical resection of the pancreas should not always be necessary in the surgical management of pancreatic solid pseudopapillary tumor in children**

*Emre Divarçi, Zafer Dökümcü, Nazan Çetingül, Deniz Nart, Funda Yılmaz Barbet, Orkan Ergün, Ahmet Çelik*

## Image of the Issue

- **219 Extraordinary biliary variant**

*Nuretdin Suna, Diğdem Özer Etik, Serkan Öcal, Haldun Selçuk, Fatih Hilmioğlu, Sedat Boyacıoğlu*

## Case Report

- **221 A rare cause of upper gastrointestinal hemorrhage: chronic thrombosis of the splenic artery**

*Sevtap Arslan, Mehmet Ruhi Onur, Erhan Akpınar*

## Letters to the Editor

- **223 Stump Appendicitis: Result of an Incomplete Surgery**

*Serkan Karaisli, Halis Bağ, Haldun Kar, Salih Can Çelik, Hüdai Genç*

- **225 Endoscopic biopsy techniques for proximal biliary strictures**

*Fatih Tekin, İlker Turan, Galip Ersöz, Ömer Özütemiz*

- **227 HLA is better than serological screening for celiac diseases in rheumatological arthritis**

*Hakim Rahmoune, Nada Boutrid, Mounira Amrane, Belkacem Bioud*

- **229 How to predict the severity of acute pancreatitis? An ongoing debate**

*Aydın Şeref Köksal, Ahmet Tarık Eminler, Erkan Parlak*

- **231 Successful endoscopic treatment of a gastrocolocutaneous fistula due to PEG tube**

*Kenan Büyükaşık, Cihad Tatar, Aziz Arı, Serkan Sarı, Hasan Bektaş*

- **233 Wasted variceal banding cap-assisted removal of embedded esophageal chicken bone: a simple and inexpensive method**

*Tark Akar, Yonca Ürün, Selim Aydemir*

## Gastroenterology Elsewhere

- **235 A new accurate model for predicting mortality up to 12 months after ERCP**

*Nalan Gülşen Ünal, Fatih Tekin*

- **237 A microbial signature for Crohn's disease**

*Ayhan Hilmi Çekin*