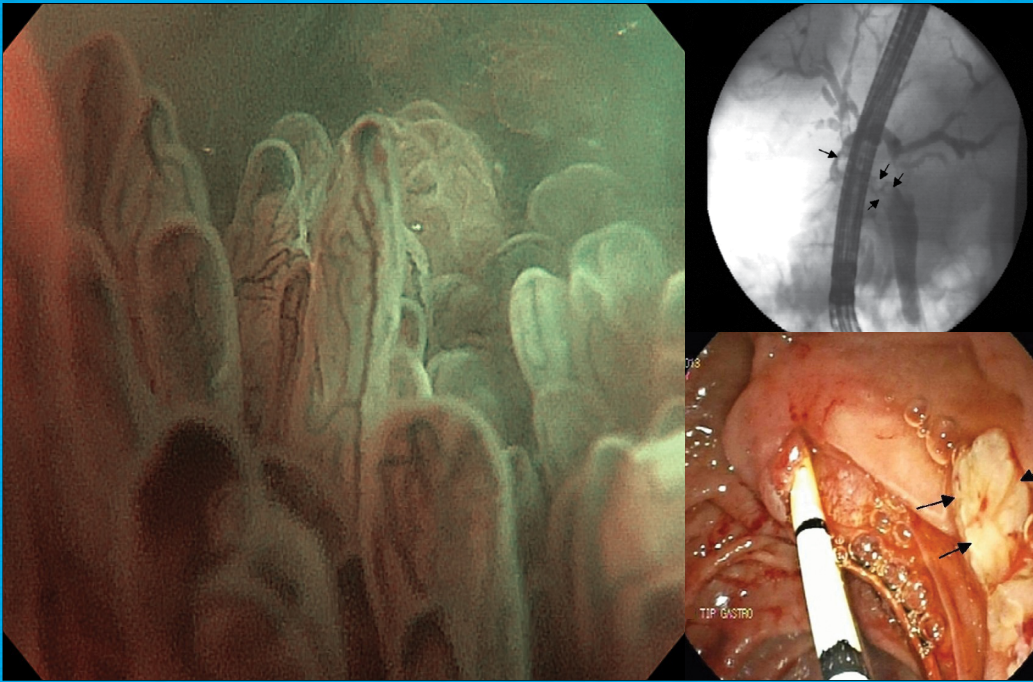




THE TURKISH JOURNAL OF GASTROENTEROLOGY

OFFICIAL JOURNAL OF THE TURKISH SOCIETY OF GASTROENTEROLOGY



**Underwater polyp view; filling defects in the
common bile duct; retrieved polypoid mass**

ISSUE HIGHLIGHTS

- Predictive factors for technically difficult ESD
- IL23R, JAK2, and STAT3 polymorphisms in IBD
- IAC and primary sclerosing cholangitis
- Zinc or synbiotic effects on acute diarrhea
- Prognostic factors of neuroendocrine tumors
- Onyx® embolization of gastric varices

◆ Indexed in PubMed/MEDLINE and Science Citation Index Expanded





THE TURKISH JOURNAL OF GASTROENTEROLOGY

■ Editor in Chief

Hakan Şentürk
Department of Internal Medicine, Division of Gastroenterology,
Bezmialem Vakıf University School of Medicine, İstanbul, Turkey

■ Associate Editors

Filiz Akyüz
Department of Gastroenterology, İstanbul University School of
Medicine, İstanbul, Turkey

Murat Aladağ
Department of Gastroenterology, İnönü University School of
Medicine, Malatya, Turkey

Canan Alkım
Clinic of Gastroenterology, Şişli Etfal Training and Research
Hospital, İstanbul, Turkey

Engin Altıntaş
Department of Gastroenterology, Mersin University School of
Medicine, Mersin, Turkey

Metin Başaranoğlu
Department of Internal Medicine, Division of Gastroenterology,
Bezmialem Vakıf University School of Medicine, İstanbul, Turkey

Billur Canbakan
Department of Internal Medicine, Division of Gastroenterology,
İstanbul University Cerrahpaşa School of Medicine, İstanbul, Turkey

Ayhan Hilmi Çekin
Clinic of Gastroenterology, Antalya Training and Research Hospital,
Antalya, Turkey

Altay Çelebi
Department of Gastroenterology, Kocaeli University School of
Medicine, Kocaeli, Turkey

Ülkü Dağlı
Department of Gastroenterology, Başkent University School of
Medicine, Ankara, İstanbul

Yusuf Erzin
Department of Internal Medicine, Division of Gastroenterology,
İstanbul University Cerrahpaşa School of Medicine, İstanbul, Turkey

Macit Gülten
Department of Gastroenterology, Uludağ University School of
Medicine, Bursa, Turkey

Ahmet Gürakar
Department of Gastroenterology and Hepatology,
Johns Hopkins University School of Medicine,
Baltimore, USA

Ramazan İdilman
Department of Gastroenterology, Ankara University School of
Medicine, Ankara, Turkey

Abdurrahman Kadayıfçı
Department of Gastroenterology, Gaziantep University School of
Medicine, Gaziantep, Turkey

Tarkan Karakan
Department of Gastroenterology, Gazi University School of
Medicine, Ankara, Turkey

Taylan Kav
Department of Gastroenterology, Hacettepe University School of
Medicine, Ankara, Turkey

Ömer Özbakır
Department of Gastroenterology, Erciyes University School of
Medicine, Kayseri, Turkey

Osman Cavit Özdoğan
Department of Gastroenterology, Marmara University School of
Medicine, İstanbul, Turkey

Cengiz Pata
Department of Gastroenterology, İstinye University School of
Medicine, İstanbul, Turkey

Murat Saruç
Department of Internal Medicine, Division of Gastroenterology,
Acıbadem University School of Medicine, İstanbul, Turkey



THE TURKISH JOURNAL OF GASTROENTEROLOGY

Müjde Soytürk

Department of Gastroenterology, Dokuz Eylül University School of Medicine, İzmir, Turkey

Veysel Tahan

Division of Gastroenterology and Hepatology, University of Missouri, Columbia, Missouri, USA

Fatih Tekin

Department of Gastroenterology, Ege University School of Medicine, İzmir, Turkey

■ Advisory Board

Ulus Salih Akarca, Turkey

Meral Akdoğan, Turkey

Hakan Akin, Turkey

Hikmet Akkız, Turkey

Naim Alkhoury, USA

Magdy Hamed Abdel-Fattah

Atwa, Egypt

Onur Başer, USA

Yusuf Bayraktar, Turkey

Fatih Beşişik, Turkey

Ali Canbay, Germany

Mehmet Çelikkbilek, Turkey

Feng Yih Chai, Malaysia

Guruvayoorappan Chandrasekaran, India

Mehmet Cindoruk, Turkey

Yunfeng Cui, China

Abdülkadir Dökmeci, Turkey

Enver Dolar, Turkey

Marc Giovannini, France

Chuanyong Guo, China

Selim Gürel, Turkey

Saadettin Hülagu, Turkey

Gianluca Ianaro, Italy

Muhammad Idrees, Pakistan

Kalpesh Jani, India

Ali Kabir, Iran

Çetin Karaca, Turkey

Zeki Karasu, Turkey

Mouen Kashab, USA

Sabahattin Kaymakoğlu, Turkey

Panagiota Kitsanta, Greece

Cleber Rosito Pinto Krueh, Brasil

Anne Marie Lennon, USA

Hao Liu, China

Edouard Louis, Belgium

Necati Örmeci, Turkey

Ersan Özarlan, Turkey

Erkan Parlak, Turkey

Kaushal Kishor Prasad, India

Tuğrul Pürnak, Turkey

Vittal Sree Rama Rao, UK

Fuat H. Saner, Germany

Erwin Santo, Israel

Ebubekir Şenates, Turkey

Olfat G. Shaker, Egypt

Vishal Sharma, India

Vikesh Singh, USA

Hala Ahmed Sherif Talkhan, Egypt

Timuçin Taner, USA

Benjamin Tharian, USA

Murat Tuncer, Turkey

Yücel Üstündağ, Turkey

Zhen Yang, China

Eugenia Yiannakopoulou, Greece

Osman Yüksel, Turkey

Cihan Yurdaydın, Turkey

Yuwei Zhang, USA

Türk Gastroenteroloji Derneği adına sahibi / Owned by on behalf of the Turkish Society of Gastroenterology: Serhat Bor • Sorumlu Yazı İşleri Müdürü / Executive Editor: Hakan Şentürk • Yayın türü / Publication Type: Yerel süreli / Bimonthly periodical • Basım yeri / Printed at: Matsis Matbaa Hizmetleri San. ve Tic. Ltd. Şti. İstanbul, Turkey (+90-212-6242111) • Basım tarihi / Printing Date: Kasım 2016 / November 2016

• Türk Gastroenteroloji Derneği tarafından yayınlanmaktadır / Published by Turkish Society of Gastroenterology, İçişleri Bakanlığı Mah. 1536 Sok No: 7, 100. Yıl Belgat, Ankara, Turkey



Publisher

İbrahim KARA

Publication Director

Ali ŞAHİN

Deputy Publication Directors

Gökhan ÇİMEN

Dilşad GÜNEY

Publication Coordinators

Esra GÖRGÜLÜ

Betül ÇİMEN

Zeynep YAKIŞIRER

Aydın Baran GÜRPINAR

Gizem KAYAN

Melike Buse ŞENAY

Finance Coordinator

Veysel KARA

Project Coordinator

Hakan ERTEN

Project Assistants

Duygunur CAN

Aylin ATALAY

Şükriye YILMAZ

Graphics Department

Ünal ÖZER

Neslihan YAMAN

Deniz DURAN

Contact

Address: Büyükdere Cad. No: 105/9

34394 Mecidiyeköy, Şişli, İstanbul-Turkey

Phone: +90 212 217 17 00

Fax: +90 212 217 22 92

E-mail: info@avesyayincilik.com



THE TURKISH JOURNAL OF GASTROENTEROLOGY

Aims and Scope

- The Turkish Journal of Gastroenterology is the double-blind peer-reviewed, open access, international publication organ of the Turkish Society of Gastroenterology. The journal is a bimonthly publication, published on January, March, May, July, September, November and its publication language is English.

The Turkish Journal of Gastroenterology aims to publish international at the highest clinical and scientific level on original issues of gastroenterology and hepatology. The journal publishes original papers, review articles, case reports and letters to the editor on clinical gastroenterology and hepatology.

Editorial and publication processes of the journal are shaped in accordance with the guidelines of the international organizations such as the International Council of Medical Journal Editors (ICMJE), the World Association of Medical Editors (WAME), the Council of Science Editors (CSE), the Committee on Publication Ethics (COPE), the European Association of Science Editors (EASE).

Processing and publication are free of charge with the Turkish Journal of Gastroenterology. Authors are not charged a fee at any point during the publication process.

The Turkish Journal of Gastroenterology is indexed in Science Citation Index Expanded and PubMed/MEDLINE.

The Turkish Journal of Gastroenterology financial expenses of the journal are covered by the Turkish Society of Gastroenterology.

Permissions and Reprints

Permissions for reproduction of materials published and reprints in the Turkish Journal of Gastroenterology should be requested from the editorial office at tgd@tgd.org.tr.

Advertising

For requests concerning advertising, please contact the Publisher.

Publisher: AVES

Address: Büyükdere Cad. 105/9 34394 Mecidiyeköy, Şişli, İstanbul, Turkey

Phone: +90 212 217 17 00

Fax: +90 212 217 22 92

Web page: www.avesyayincilik.com

E-mail: info@avesyayincilik.com

Instructions for authors

Instructions for authors are published in the journal pages and could be accessed at the web site of the journal www.turkjgastroenterol.org.

Material Disclaimer

Statements or opinions expressed in the manuscripts published in the Turkish Journal of Gastroenterology reflect the views of the author(s) and not the opinions of the editors, the editorial board and the publisher; the editors, the editorial board and the publisher disclaim any responsibility or liability for such materials.

The journal is printed on an acid-free paper.





THE TURKISH JOURNAL OF GASTROENTEROLOGY

Instructions to Authors

The Turkish Journal of Gastroenterology is the double-blind peer-reviewed, international open-access publication organ of the Turkish Society of Gastroenterology. The Turkish Journal of Gastroenterology publishes original papers, review articles, case reports and letters to the editor on clinical gastroenterology and hepatology. The journal is a monthly periodical and its publication language is English.

The Turkish Journal of Gastroenterology discourages the submission of more than one article dealing with related aspects of the same study. Review articles on selected clinical and basic topics of interest will be solicited by the editors. In exceptional cases, non-invited reviews may be considered for publication.

Editorial and publication processes of the journal are shaped in accordance with the guidelines of the international organizations such as the International Council of Medical Journal Editors (ICMJE), the World Association of Medical Editors (WAME), the Council of Science Editors (CSE), the Committee on Publication Ethics (COPE), the European Association of Science Editors (EASE)

The Turkish Journal of Gastroenterology will only evaluate manuscripts submitted via the journal's self-explanatory online manuscript submission and evaluation system, manuscripts submitted via any other medium will not be evaluated.

Manuscripts are published on the understanding that they are original contributions and do not contain data that have been published elsewhere or are under consideration by another journal. Meeting abstracts are not considered as duplicate publications but should be disclosed in the cover letter accompanying the manuscript.

Authors must obtain written permission from the copyright owner to reproduce previously published figures, tables, or any other material in both print and electronic formats. The original source should be cited within the references and below the reprinted material.

The Turkish Journal of Gastroenterology requires each submission to be accompanied by a Copyright Transfer Form, an Author Contributions Form and an ICMJE Form for Disclosure of Potential Conflicts of Interest.

Statements or opinions expressed in the manuscripts published in The Turkish Journal of Gastroenterology reflect the views of the author(s) and not the opinions of the editors, the editorial board or the publisher; the editors, the editorial board and the publisher disclaim any responsibility or liability for such materials.

The final responsibility in regard to the published content rests with the authors.

Each individual listed as an author should fulfil the authorship criteria recommended by the International Committee of Medical

Journal Editors (Uniform Requirements for Manuscripts Submitted to Biomedical Journals. <http://www.icmje.org>). Individuals who contributed to the preparation of the manuscript but do not fulfil the authorship criteria should be acknowledged in an acknowledgments section, which should be included in the title page of the manuscript. If the editorial board suspects a case of "gift authorship", the submission will be rejected without further review.

The Turkish Journal of Gastroenterology requires and encourages the authors and the individuals involved in the evaluation process to disclose any existing or potential conflicts of interests including financial, consultant, institutional and other relationships that might lead to bias or a conflict of interest.

A submitted manuscript will not be evaluated for publication until a conflict of interest disclosure is submitted. The disclosure should also be included in the main document before the reference list and in the cover letter. The following information must be provided:

- The author acting as the submission's guarantor and the corresponding author must be identified in the letter to the editor.
- Any financial or editorial assistance received to support the research and/or article should be cleared.
- Identification of any relationships that provided financial or editorial support for the study which may in potential cause competing interests for the submission.

The authors should state in the Materials and Methods section of the main text that experiments have been performed in compliance with the ethical principles of the assigned institutional board or national committee. Application or approval number/year for the study should also be indicated.

It is the author's responsibility to carefully protect the patients' anonymity and to verify that any experimental investigation with human subjects reported in the submission was performed with informed consent and following all the guidelines for experimental investigation with human subjects required by the institution(s) with which all the authors are affiliated with. For photographs that may reveal the identity of the patients, signed releases of the patient or of his/her legal representative should be enclosed.

When reporting experiments on human subjects, indicate whether the procedures followed were in accordance with the ethical standards of the responsible committee on human experimentation (institutional or regional) and with the Helsinki Declaration (JAMA 2000;284:3043-3049).

As part of submission of the manuscript, the correspondent author should send a short statement declaring that he/she accepts to undertake all the responsibility for authorship during the submission and review stages of the manuscript.



THE TURKISH JOURNAL OF GASTROENTEROLOGY

Originality, high scientific quality and citation potential are the most important criteria for a manuscript to be accepted for publication.

Manuscripts submitted to the journal will first go through a technical evaluation process where the editorial office staff will ensure that the manuscript is prepared and submitted in accordance with the journal's guidelines. Submissions that don't conform the journal's guidelines will be returned to the submitting author with technical correction requests. Manuscripts that conform the journal's guidelines will be reviewed by at least 3 external peer reviewers during the evaluation process. The Editor in Chief is the final authority in the decision making process.

Authors of a paper accepted for publication in the Turkish Journal of Gastroenterology should be in consent of that editors could make corrections without changing the basic meaning of the text of the manuscript.

All submissions are screened by a similarity detection software. In case there is more than 20% similarity with existing studies, the paper is automatically rejected.

MANUSCRIPT PREPARATION

Manuscripts should be prepared in accordance with the ICMJE - Recommendations for the Conduct, Reporting, Editing and Publication of Scholarly Work in Medical Journals (updated in December 2015 - available at www.icmje.org).

Original Investigations and Reviews should be presented according to the guidelines: randomized study - CONSORT, observational study - STROBE, study on diagnostic accuracy - STARD, systematic reviews and meta-analysis PRISMA, nonrandomized behavioural and public health intervention studies - TREND.

Cover letter

A letter of submission must be included in all manuscripts, including revised manuscripts.

This letter may be used to emphasize the importance of the study or new significant points included to the revised manuscript. This letter can be typed or added to the relevant section of the online submission using copy/paste method. In the cover letter of each submission, the authors should briefly state the existing knowledge relevant to the study and the contributions their study make to the existing knowledge.

Title page

A separate title page should be submitted with all submissions and should include the title of the manuscript, name(s), affiliations and major degree(s) of the author(s) and source(s) of the work or study, a

short title (running head) of no more than 50 characters. The name, address, telephone (including the mobile phone number) and fax numbers and e-mail address of the corresponding author should be listed on the title page. Grant information and other sources of support should also be included on the Title page. Individuals who contributed to the preparation of the manuscript but do not fulfil the authorship criteria should be acknowledged in the title page.

Main Document

Abstract

All manuscripts should be accompanied an abstract. A structured abstract is required with original articles and it should include the following subheadings: Background/Aims, Materials and Methods, Results and Conclusion. A structured abstract is not required with review articles and case reports. The abstract should be limited to 250 words for original articles and review articles and 150 words for case reports.

Keywords

Each submission should be accompanied by 3 to 5 key words which should be picked from the Medical Subject Headings (MeSH) list (www.nlm.nih.gov/mesh/MBrowser.html).

Main Text

Original Articles: Acceptance of original papers will be based upon the originality and importance of the investigation. Turkish Journal of Gastroenterology encourages submission of widely readable clinical studies. The journal does not consider animal experiments for evaluation and only prospective or retrospective clinical studies are evaluated as original papers.

Original Articles should be structured with Introduction, Materials and Methods, Results and Discussion subheadings. The number of references cited should not exceed 35 and the main text should be limited to 4000 words. An original article can be signed by maximum 6 authors unless it is a multi-center study or that it required extensive labour.

Introduction: Provide background information that will orient the general reader.

Materials/Patients and Methods: Materials/Patients and Methods: Provide a level of detail such that another investigator could repeat the work for methods that are used without significant modification. Citation of the original work will suffice. For reports of research using human subjects, state that informed consent was obtained from each patient and that institutional ethic committee approval was obtained.

State if informed consent was obtained from each patient and that ethic committee approval was obtained.



THE TURKISH JOURNAL OF GASTROENTEROLOGY

Results: Use tables and figures for better understanding. Please refer to the instructions before uploading images to the website.

Discussion: Discuss your results by citations; avoid discussion of other related works. Do not engage in a literature review.

Case Reports: Turkish Journal of Gastroenterology encourages submission of original and interesting case series. Single case reports are not considered for evaluation and publication; however, submission of single case reports in the letter to the editor format is possible and encouraged.

The main text of Case Reports should be limited with 1200 words and should be structured with the following subheadings; Introduction, Case Presentation and Discussion. The maximum number of references cited in a case report should be 10. A case report can be signed by maximum 5 authors unless the report entails a rare disease or condition with a cohort or multi-center.

Review Articles: Mainly, invited reviews on specific topics are published. In exceptional cases, non-invited reviews may be considered for publication. Individuals interested in writing a review article must correspond with the Editorial Office regarding the topic before submitting the entire manuscript. The subheadings of the review articles should be planned by the authors. However, each review article should include a "Conclusion" section. The main text of review articles should be limited with 5000 words. The number of references cited should not exceed 50.

Image of the Issue: Turkish Journal of Gastroenterology encourages authors to submit their striking clinical images that may challenge and inform readers and contribute to their education. This type of submissions should present the image as an "unknown" and should encourage the readers to interpret and diagnose the image. The answer will be presented on a separate page of the issue so the main text or the title should not reveal the answer. The case should be described in the first part, the answer should discuss the image findings and the diagnosis. The article should not be longer than 1200 words.

Editorials: Invited brief editorial comments on selected articles are published in The Turkish Journal of Gastroenterology. Editorials should not be longer than 1000 words excluding references.

Letter to the editor: Letters to the editor, containing case reports or brief reports of studies should not be longer than 400 words excluding references. Letters should include no more than 5 references.

Invited Letters to the Editor: Letters related to articles published in recent issues of the Turkish Journal of Gastroenterology or to topics

of gastroenterology are welcomed and will be considered for publication. A publication fee will not be requested for the letters in this category.

- Letters to the editors should be sent within 6 months of publication of the commented article. Should not be longer than 400 words excluding references. Commented article should be cited as a reference. Letters should include no more than 5 references.
- Letters to the editor, containing case reports or brief reports of studies should not be longer than 400 words excluding references. Letters should include no more than 5 references.

All acronyms and abbreviations used in the manuscript should be defined at first use, both in the abstract and the main text. The abbreviation should be provided in parenthesis following the definition.

Statistical analysis should be performed in accordance with guidelines on reporting statistics in medical journals (Altman DG, Gore SM, Gardner MJ, Pocock SJ. Statistical guidelines for contributors to medical journals. *Br Med J* 1983; 7; 1489-93.). Information on the statistical analysis process of the study should be provided within the main text.

When a drug, product, hardware, or software mentioned within the main text product information, including the name of the product, producer of the product, city of the company and the country of the company should be provided in parenthesis in the following format: "Discovery St PET/CT scanner (General Electric, Milwaukee, WI, USA)"

All references, tables and figures should be referred to within the main text and they should be numbered consecutively in the order they are referred to within the main text.

Limitations, drawbacks and shortcomings of original articles should be mentioned in the "Discussion" section before the conclusion paragraph.

References

References should be numbered consecutively in the order they are referred to within the main text and all references listed in the reference list should be referred to within the main text in parenthesis. Style and punctuation of each reference in the reference list should be in accordance with the examples listed below;

Standard journal article: Journal titles should be abbreviated in accordance with journal abbreviations used in Index Medicus (for journal abbreviations consult List of Journals indexed for MEDLINE published annually by NLM at <http://www.nlm.nih.gov/tsd/serials/lji.html>). When there are six or fewer authors, all authors



THE TURKISH JOURNAL OF GASTROENTEROLOGY

should be listed. If there are seven or more authors, first 3 should be listed, followed by "et al.". A list of authors should be followed by the full title of the article, journal title, year, volume and page numbers.

Example: Mittal RK, Holloway RH, Penagini R, et al. Transient lower esophageal sphincter relaxation. *Gastroenterology* 1995; 109: 601-10.

Books:

Chapter in a book: Sherry S. Detection of thrombi. In: Strauss HE, Pitt B, James AE, editors. *Cardiovascular Medicine*. St Louis: Mosby; 1974.p. 273-85.

Personal author(s): Cohn PF. *Silent myocardial ischemia and infarction*. 3rd ed. New York: Marcel Dekker; 1993.

Editor (s), compiler(s) as author: Norman IJ, Redfern SJ, editors. *Mental health care for elderly people*. New York: Churchill Livingstone; 1996.

Conference paper: Bengissson S, Sothemin BG. Enforcement of data protection, privacy and security in medical informatics. In: Lun KC, Degoulet P, Piemme TE, Rienhoff O, editors. *MEDINFO 92. Proceedings of the 7th World Congress on Medical Informatics*; 1992 Sept 6-10; Geneva, Switzerland. Amsterdam: North-Holland; 1992. P. 1561-5.

Scientific or technical report: Smith P, Golladay K. Payment for durable medical equipment billed during skilled nursing facility stays. Final report. Dallas (TX) Dept. of Health and Human Services (US). Office of Evaluation and Inspections: 1994 Oct. Report No: HHSIGOE 169200860.

Dissertation: Kaplan SI. Post-hospital home health care: the elderly access and utilization (dissertation). St. Louis (MO): Washington Univ. 1995.

Article in electronic format: Morse SS. Factors in the emergence of infectious diseases. *Emerg Infect Dis* (serial online) 1995 Jan-Mar (cited 1996 June 5): 1(1): [24 screens]. Available from: <http://www.cdc.gov/ncidodl/EID/cid.htm>.

Tables

Tables should be included in the main document and should be presented after the reference list. Tables should be numbered consecutively in the order they are referred to within the main text. A descriptive title should be provided for all tables and the titles should be placed above the tables. Abbreviations used in the tables should

be defined below the tables by footnotes (even if they are defined within the main text). Tables should be created using the "insert table" command of the word processing software and they should be arranged clearly to provide an easy reading. Data presented in the tables should not be a repetition of the data presented within the main text but should be supporting the main text.

Figures and Figure Legends

Figures, graphics and photographs should be submitted as separate files (in TIFF or JPEG format) through the submission system. The files should not be embedded in a Word document or the main document. When there are figure subunits, the subunits should not be merged to form a single image. Each subunit should be submitted separately through the submission system. Images should not be labelled (a, b, c, etc.) to indicate figure subunits. Thick and thin arrows, arrowheads, stars, asterisks and similar marks can be used on the images to support figure legends. Like the rest of the submission, the figures too should be blind. Any information within the images that may indicate an individual or institution should be blinded. The minimum resolution of each submitted figure should be 300DPI. To prevent delays in the evaluation process all submitted figures should be clear in resolution and large in size (minimum dimensions 100x100 mm)

Figure legends should be listed at the end of the main document.

Once a manuscript is accepted for publication it will be provided with a registered DOI number following the acceptance decision. Manuscripts accepted for publication by the Turkish Journal of Gastroenterology will be published as ahead of print articles prior to the printing date of their scheduled issue. Corresponding author will be provided with a PDF Proof by the publisher once the production process of an accepted manuscript is over. The publisher will request the corresponding author to list their correction requests if there are any and approve the publication of the manuscript.

PERMISSIONS AND REPRINTS

Permissions for reproduction of materials published and reprints in the Turkish Journal of Gastroenterology should be requested from the editorial office at tgdl@tgdl.org.tr.

INSTRUCTIONS FOR AUTHORS

Instructions for authors are published in the journal pages and could be accessed at the web site of the journal www.turkjgastroenterol.org.

The journal is printed on an acid-free paper.



THE TURKISH JOURNAL OF GASTROENTEROLOGY

Images of the Issue

- **484 Prediction of the histotype of a rectal polyp with the help of an underwater examination**
Peter Akabah, Alina Boeriu, Jeno Robert Bartha, Daniela Dobru
- **486 Intractable severe epigastric pain in a 57-year-old woman**
Ali Naki Yücesoy, Süheyl Poçan
- **488 A polypoid mass in the common bile duct**
Mehmet Asil, Ramazan Dertli, Murat Biyık, Pembe Oltulu, Hüseyin Ataseven, Hakkı Polat, Ali Demir
- **491 Gastroduodenal lesions in iron-deficiency anemia**
Antonio Cerezo Ruiz

Covering the Cover

- **493 Covering the Cover**
Fatih Tekin

Review

- **495 Microbiome alterations observed in liver diseases present opportunities for potential fecal transplantation**
Ryan D. Heath, Fazia Mir, Jamal A. Ibdah, Veysel Tahan
- **499 Stem cell transplantation for the treatment of liver diseases: A systematic review and meta-analysis**
Zishuai Liu, Junnan Li, Ping Li, Mei Bai, Yanjun Guo, Mingzi Han, Feifei Zhang, Robin Ahmed, Shizhu Jin

Original Articles

- **509 Best prognostic factor of neuroendocrine tumors: Grade or Stage? A multidisciplinary single-center study**
Ersin Özasan, Fahri Bayram, Halit Karaca, Şebnem Gürsoy, Figen Öztürk, Erdoğan Sözüer, Ümmühan Abdurrezzak, Alper Yurci, Gülten Can Sezgin, Afra Yıldırım, Osman Başpınar, Mustafa Kula, Metin Özkan
- **515 Factors associated with elevated serum chromogranin A levels in patients with autoimmune gastritis**
Çağdaş Kalkan, Fatih Karakaya, İrfan Soykan
- **521 Screening of patients with juvenile idiopathic arthritis and those with rheumatoid arthritis for celiac disease in southwestern Iran**
Mozhgan Moghtaderi, Shirin Farjadian, Elham Aflaki, Naser Honar, Soheila Alyasin, Maryam Babaei
- **525 Investigation of IL23R, JAK2, and STAT3 gene polymorphisms and gene–gene interactions in Crohn's disease and ulcerative colitis in a Turkish population**
Güray Can, Ahmet Tezel, Hakan Gürkan, Hilmi Tozkır, Gülbin Ünsal, Ali Rıza Soylu, Hasan Celalettin Ümit



THE TURKISH JOURNAL OF GASTROENTEROLOGY

- **537 Effects of zinc or synbiotic on the duration of diarrhea in children with acute infectious diarrhea**
Ahmet Sami Yazar, Şirin Güven, Ener Çağrı Dinleyici
- **541 Predictive factors for technically difficult endoscopic submucosal dissection in large colorectal tumors**
Yuqi He, Xin Wang, Yongqiang Du, Victoria Yee-Wa Yung, Peng Jin, Jianqiu Sheng
- **547 Prevalence of IgG-4-associated cholangiopathy based on serum IgG-4 levels in patients with primary sclerosing cholangitis and its relationship with inflammatory bowel disease**
Seyed Alireza Taghavi, Shaghayegh Kaedi Majid, Mahnoosh Sianati, Masood Sepehrimanesh

Letters to the Editor

- **553 Endoscopic antegrade cholangiography in a patient with Bouveret's syndrome**
Aydın Şeref Köksal, Ahmet Tarık Eminler, Ayla Yıldız Savaş, Mustafa İhsan Uslan, Erkan Parlak
- **555 Treatment of unusual esophageal stenosis caused by gastroesophageal reflux disease**
Zhi-tong Li, Feng Ji, Xin-wei Han, Teng-fei Li, Zhong-gao Wang
- **557 Transhepatic antegrade embolization of the esophageal and gastric varices with Onyx®**
Barbaros Erhan Çil, Ferdi Çay, Bora Peynircioğlu, Ege Altan, Taylan Kav
- **560 Intramural hematoma of the esophagus: An unusual complication of endoscopic retrograde cholangiopancreatography**
Maddalena Zippi, Wandong Hong, Giampiero Traversa
- **562 A 69-year-old woman with an unusual case of dysphagia**
Rosario Arena, Mario Luciano Brancaccio, Fabio De Vincentis, Alessandro Mussetto, Andrea Buzzi, Omero Triossi
- **564 Chronic intestinal pseudo-obstruction: An unusual presentation**
Osama Siddique, Ayesha Siddique, Farhan Ashraf, Ryan Broderick

Gastroenterology Elsewheres

- **566 High-resolution manometry versus conventional manometry in diagnosis of patients with nonobstructive dysphagia**
Altay Çelebi
- **568 Allogenic adipose derived stem cells present a potential novel approach for treating refractory fistulizing Crohn's disease**
Ryan D. Heath, Veysel Tahan

27th Volume Index

- **570 Reviewer list**